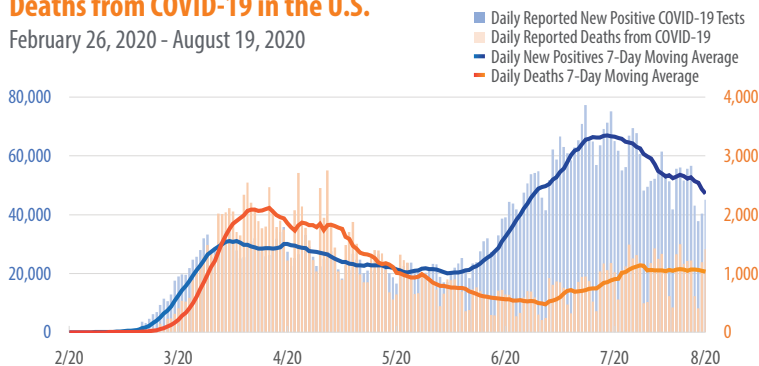


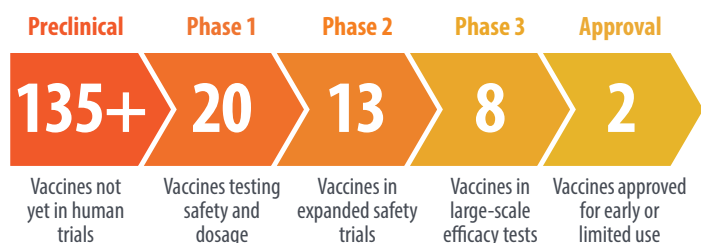
First Trust COVID-19 TRACKER

Daily Reported New Positive COVID-19 Tests vs. Daily Reported Deaths from COVID-19 in the U.S.

February 26, 2020 - August 19, 2020



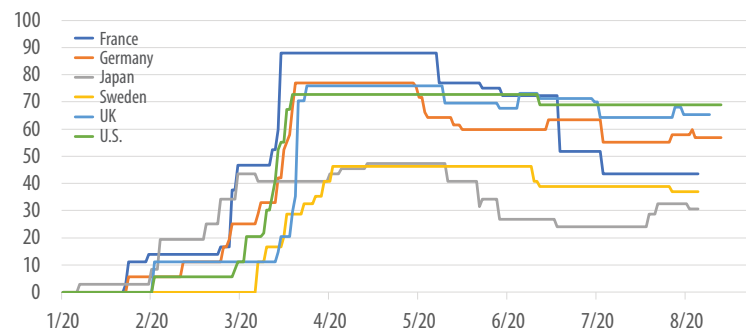
Source: Covidtracking.com



Source: The New York Times. Data as of August 20, 2020.

Lockdown Severity Around the World

January 1, 2020 - August 17, 2020

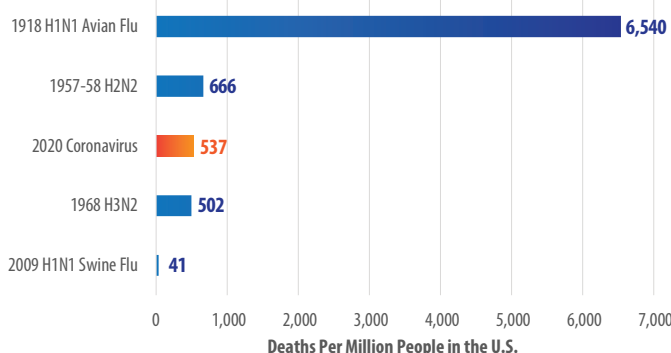


Sources: Ourworldindata.org, Oxford University Covid-19 Government Response Tracker.

COVID-19: Government Response Stringency Index - the index is a composite measure based on nine response indicators including school closures, workplace closures, restrictions on large gatherings, travel bans, etc. (0 to 100, 100 = Strictest).

Comparing Past Pandemics in the U.S.

As of August 19, 2020

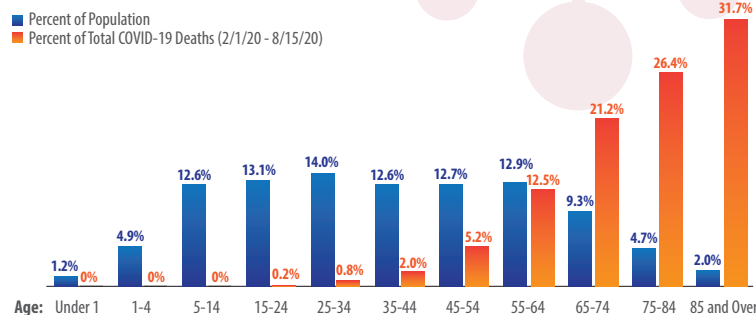


Source: Worldometers.info, CDC.gov, U.S. Census Bureau

A recent survey found that the U.S. public believes that **20% of the U.S. population has been infected by COVID-19** and **9% have died** due to the pandemic, overestimating confirmed cases by 20x and deaths by 225x.¹

Deaths by Age vs. Share of Population in the U.S.

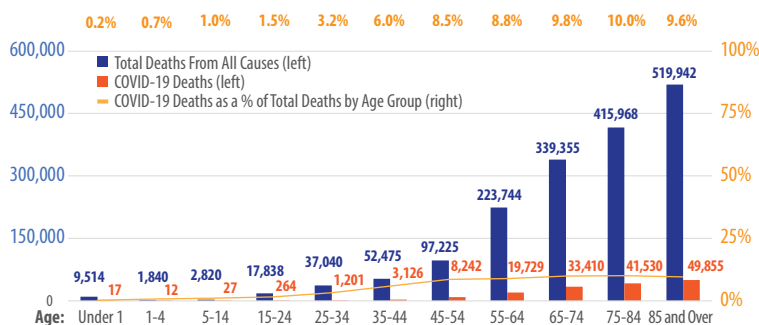
As of August 15, 2020



Source: CDC.gov, National Center for Health Statistics

Total Deaths and COVID-19 Deaths in the U.S. by Age Group

February 1, 2020 - August 15, 2020

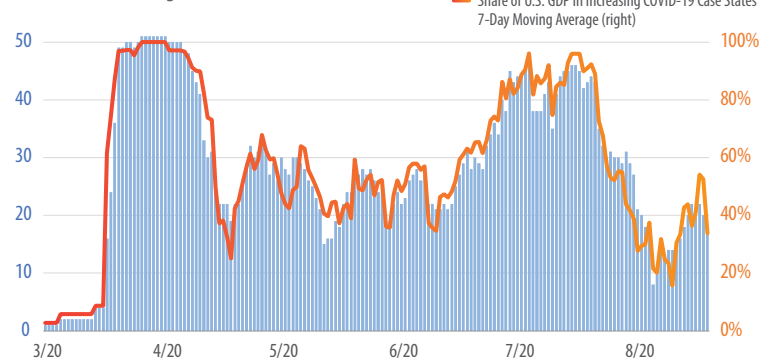


Source: CDC.gov, National Center for Health Statistics

According to a CDC survey conducted from June 24-30, 2020, **25.5% of young Americans age 18-24 reported having seriously considered committing suicide in the past 30 days**. This represents a significant increase from an average of only 7.9% for 18-25 year olds from 2008 to 2018.²

Number of States with Increasing Positive COVID-19 Tests and Their Share of U.S. GDP

March 1, 2020 - August 19, 2020



Source: Covidtracking.com, BEA.gov, First Trust Advisors

¹kekstcnc.com (As of July 27, 2020); ²CDC.gov, samhsa.gov